



Your Yacht partner.

YACH FOR SALE

ALULIM

—
*The 53m
Superyacht built
by Sanlorenzo*



Need advice?
Contact us.

+33 6 09 20 26 83

@ contact@newmybbas.com

www.newmybbas.com

Built for a highly experienced owner that any charterer will appreciate in 2018, 53m luxury motor yacht **ALULIM** has been crafted with the utmost thought and precision. **ALULIM** is not simply a Sanlorenzo, she is THE Sanlorenzo. She is the yard's finest showcase of performance and technology with features, certifications and extras that have not been granted to any other model since her build.

YACHT SPECS

ALULIM

Yacht Sale Details for 'ALULIM', the 53m Superyacht built by Sanlorenzo

SPECIFICATIONS

LENGTH

53 m

BEAM

9.45 m

DRAFT

2.90 m

YEAR

2018 refit 2023

CRUISING SPEED

12 Knots

Max speed 17 Knots

ACCOMODATIONS

GUESTS

12

CABINS

6

CREW

11

CABIN CONFIGURATION

1 Master

2 Twin

3 Double

STABILIZERS: ZERO SPEED

SALE INFORMATION

ASKING PRICE

€ 30,000,000

VAT

PAID

FLAG

MADEIRA

PORT OF REGISTRY

PORTUGAL

LOCATED

EAST MEDITERRANEAN,
FRANCE

YACHT AMENITIES & TOYS



AIR CONDITIONING



1 JET SKI SEADOO
SPARK
1 JET SKI SEADOO
GTR230
2 SEABOB F5S



SATELLITE TV
& WIFI



SNORKELING &
2 PADDLES



TOWABLE TOYS



1 TENDER LIMOUSINE
7,6 M





Forward thinking technical innovations meet large internal volumes and serene outdoor spaces aboard ALULIM, with an extensive use of glass encapsulating the reflective properties of the ocean.

Her floating tender garage floods to allow the tender to enter and exit with ease, and when not in use the floor lowers securely to resume use as part of the expansive beach club, with fold down terraces opening to port and starboard.





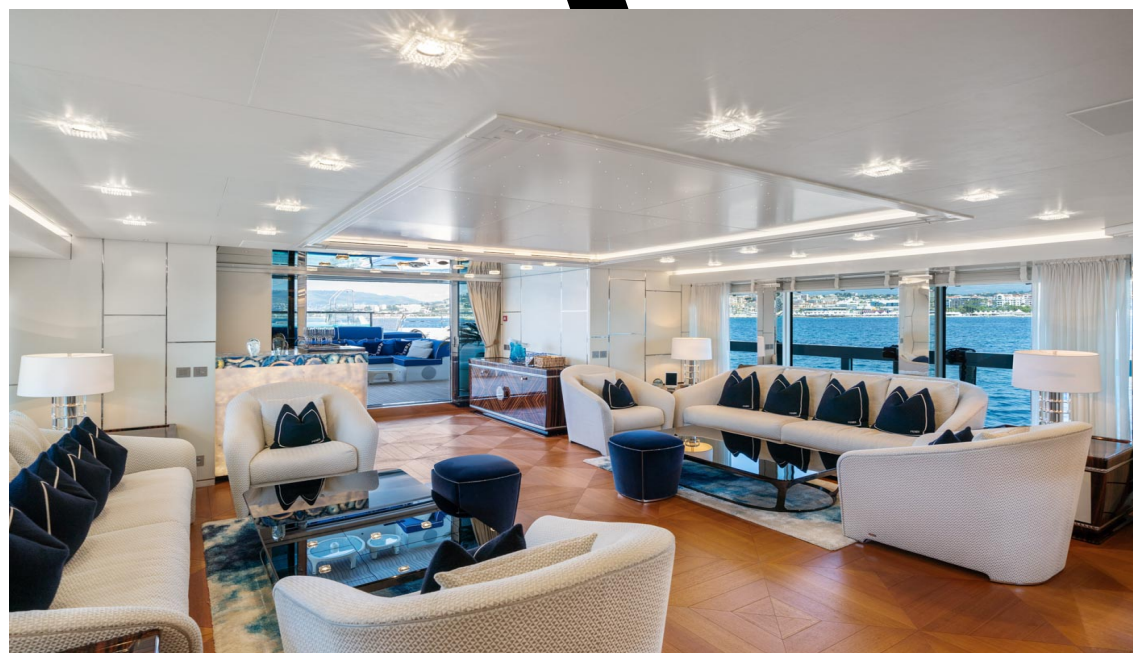
Natural light fills the beach club from the glass-bottom pool above on the main deck, instilling a sense of calm throughout the area. When in position, the beach club features freestanding furniture and a bar area, forward of which is a large well equipped gymnasium, complete with Technogym equipment. Aft of the beach club is the spacious swim platform.







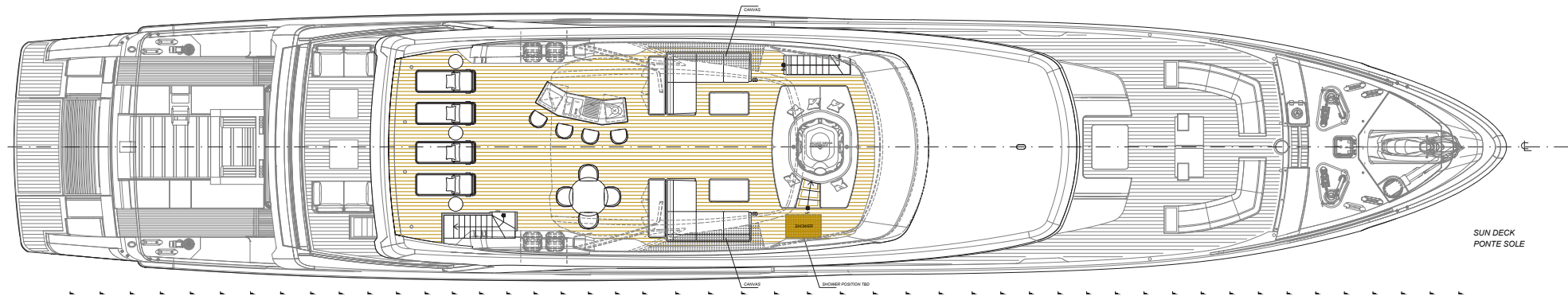
With leather, parquet, marbles, silk wallpaper, ebony amaro veneers, mother of pearl inlays, and crystal handles throughout the guest interior, complemented by loose furniture from Fendi, including sofas, chairs and cushions in both the interior and exterior.



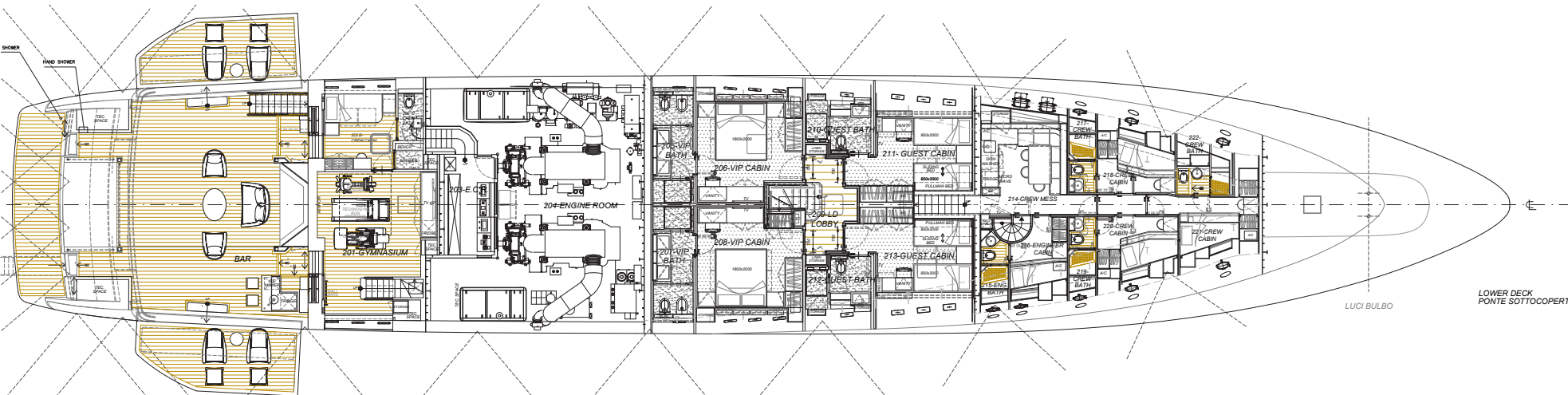
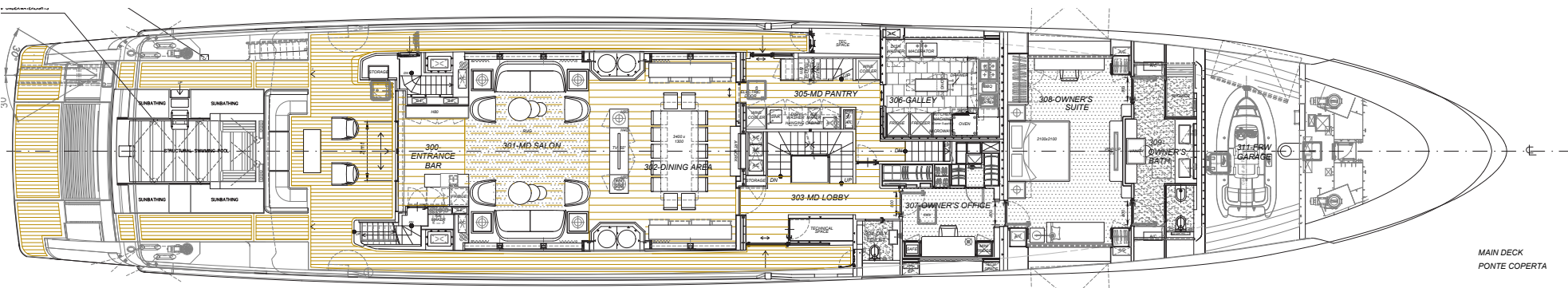
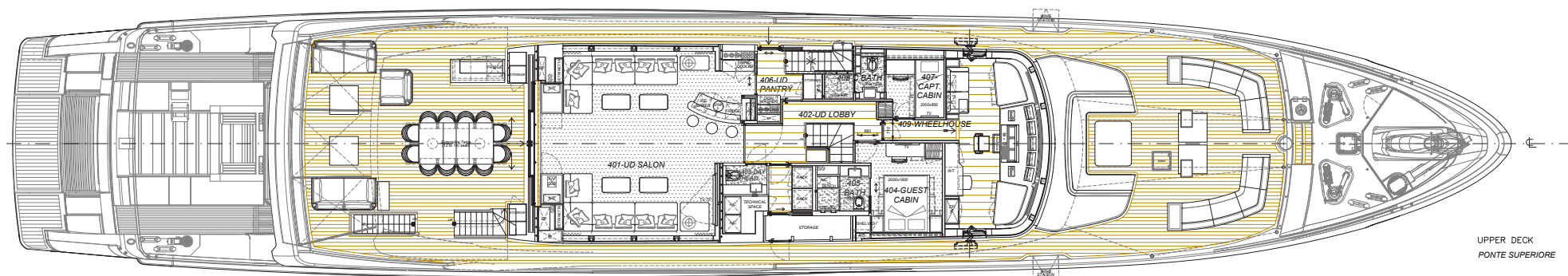




A detailed line drawing showing the side profile of the motor yacht 'SILVIA'. The vessel features a white hull with dark grey or black upper sections and large, dark-tinted windows. An Italian flag is visible at the stern. The yacht has a complex superstructure with multiple levels, including a prominent radar mast and various antennas. The name 'SILVIA' is printed on the side of the hull. The drawing is a technical illustration, likely for a brochure or specification sheet.



DECK PLAN



DECK PLAN

